



SAM WO ENGINEERING HK LTD.  
**三和聯貿工程有限公司**

## EV CHARGER SYSTEM & PRODUCTS PROPOSAL

電動車充電系統與產品提案

CK-EV-SPP

Village House / Detached House / Villa EV Charger  
Installation Plan 村屋 / 獨立屋 / 別墅 車充樁安裝方案



## ABOUT US & SERVICE SCOP 關於我們 與 服務範疇

### Electrical System Installation / Upgrade 3 Phase Power / Maintenance & Inspection 電力系統安裝 / 單相轉三相電錶 / 維修保養檢查



- Apply for single-phase upgrade to 3-phase power meter from CLP
- Act as an agent for power system design drawings and layout drawings
- Qualified registered electrical contractor approval (WR1)
- Addition & improvement, inspection & maintenance of electrical equipment
- Consulting on power system application and various maintenance
- 代辦出圖向中電申請單相轉三相電錶
- 代辦出電力系統設計圖、檢視圖
- 合資格註冊電業承辦商簽批(WR1)
- 增加與改善、檢查及維修電力設備
- 諮詢電力系統申請及各類維護

## NICE TO MEET YOU 幸會認識您

### Solar Panel System Installation / Maintenance & Inspection 太陽能系統安裝 / 維修保養檢查



- Apply for the Renewable Energy Repurchase Program to CLP
- Qualified registered structural engineer signature (AP)
- Qualified registered electrical contractor approval (WR1)
- Acting on behalf of demolition and reporting of lifting of UBW
- Existing PV system upgrade, maintenance, inspection & cleaning
- Optimizing the Ex. roof supports such as enclosure, adding equipment
- Grid-connected buyback or off-grid power storage of PV system
- Consultation on PV system application & sustainability
- 代辦出圖向中電申請再生能源回購計劃
- 合資格註冊結構工程師簽批(AP)
- 合資格註冊電業承辦商簽批(WR1)
- 代辦拆卸及申報解除僱建令
- 現有 PV 系統升級、維修、檢查及清洗
- 優化現有天台支架如圍封,增加設備
- 並網回購或離網儲電 PV 系統
- 諮詢 PV 系統申請及可持續發展性

### EV Charging Facilities Installation / Additional CLP Meter 電動車充電設備安裝 / 額加中電分錶



- Apply for additional electricity sub-meters from CLP
- Qualified registered electrical contractor approval (WR1)
- Research & plan the efficiency optimization of EV charging equipment
- Installation or upgrade of various EV charging equipment
- Single-phase Power or 3-phase Power or PV system configuration EV charger power supply
- Consulting on application for EV charging system and sustainability
- 代辦出圖向中電申請額外電力分錶
- 合資格註冊電業承辦商簽批(WR1)
- 研究規劃車充設備效能最優化
- 各類車充設備安裝或升級
- 單相電/三相電/PV 系統配置車充供電
- 諮詢車充系統申請及可持續發展性



THE QUALITY YOU DESERVE

您值得擁有的質量

## OUR PRODUCTS

The main products are EV Chargers, EV Charging cables, EV Charging adapters of Type1, Type2, GB/T.





WALLBOX MODE 3-TYPE1/TYPE2/GB

THE QUALITY YOU DESERVE

您值得擁有的質量



• Mode 3: Charging Station with a 5M Type2 cable(LED)

Model:  
Q6-AC-03-US(32a phase)  
Q6-AC-03-UR(32a phase)  
Q6-AC-03-GB-T(21kw/11kw/7kw)



• Mode 3: Charging Station with a 5M Type2 cable(4.3 inch)

Model:  
Q6-AC-03-US(32a phase)  
Q6-AC-03-UR(32a phase)  
Q6-AC-03-GB-T(21kw/11kw/7kw)



• Mode 3: Charging Station with a 5M Type2 cable(7 inch)

Model:  
Q6-AC-03-US(32a phase)  
Q6-AC-03-UR(32a phase)  
Q6-AC-03-GB-T(21kw/11kw/7kw)



This is a simple wallbox, which is divided into 2 kinds: Charging Cable Type and Socket Type, depending on the way the EV is connected. It comes with a colorful LCD display(Optional) that allows users to clearly see the current charging status including charging time, voltage, current internal temperature and etc.

It can automatically fix non-hardware faults that occur during charging. Faults that require manual repair will be displayed on the LCD screen. The housing is sturdy and has an IP65 rating.

It can be easily installed on the wall. If the customer prefers wallbox to be installed on the stand, we can provide the matching one.

The APP wallbox and the RFID wallbox appearing below are upgraded versions of this product, with the same consistent performance and installation method.



### Input & Output

Power rating	7KW(1 Phase)/ 11KW(3 Phase)
Charging interface type	Type1/Type2/GB-T
Input & Output voltage	AC220V±10%(1 Phase)/ AC380V±10%(3 Phase)
Output current	16A/32A
Frequency	45-65Hz

### Protection

Overvoltage protection	✓
undervoltage protection	✓
overload protection	✓
short circuit protection	✓
ground protection	✓
over temperature protection	✓
lightning protection	✓
Leakage protection	✓
Flame retardant protection	✓

### Function & Accessory

WIFI/4G/OCPP1.6/LAN	Optional
RFID(2 user cards)	Optional
RCD	Type A / type A+6mA DC
4.3 inch display	Optional
LED Indicator light	✓
Home load balancing(DLB)	Optional

### Working environment

IP grade	≥IP65
Working temperature	-40~+65°C
Working altitude	≤2000m
Working Humidity	5%-95% no condensation
Cooling mode	Natural cooling
MTBF	≥100000H
Special protection	UV resistance
Standby power	3W/5W(With LCD)

### Mechanical

Dimension	295(H) x 180(W) x 106.7(D)mm
Cable length	5M(16.4FT) standard,or other size customizable
Weight	5.0kg (Including charging gun)

### Mounting Accessories

Wall-mounting bracket	✓
Ground-mounting pole	Optional

### Certificate

Certificate

CE,OZEV LIST,UKCA,SASO,TUV,CB   



## TECHNICAL INFORMATION

### 產品信息

#### Input Voltage

額定電壓  
AC220V

#### Input Frequency

輸入頻率  
50HZ / 60HZ

#### output current

輸出電流  
32A

#### Maximum Power

大功率  
7KW

#### Standby Power Consumption

模塊控制功耗  
< 7W

#### RCD Protection

RCD 保護  
AC 30ma

#### Working Temperature

工作溫度  
-30°C~+ 80°C

#### Dimension

尺寸  
180mm\*295mm\*106.7mm

#### Weight

重量  
3.5kg

#### Certification

認證  
UKCA & CE





## PRODUCT DETAILS

Q6 SERIES

產品細節



Emergency Stop Button  
急停按鈕



Charging pile gun holder  
槍架



Light display screen  
燈光屏幕



environmentally friendly tpu cable  
環保槍線



European Plug  
槍頭

THE QUALITY YOU DESERVE

您值得擁有的質量



THE QUALITY YOU DESERVE

您值得擁有的質量

FULLY ADAPTED TO  
DIFFERENT ENVIRONMENTS

完全適應不同的環境

RAINPROOF

雨天



SNOW PROTECTION

下雪天



Silver plated pin  
鍍銀槍針



High flameretardant material  
高阻燃材料



Compression test  
抗壓試驗



waterproof material  
防水材料





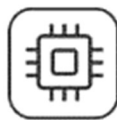
## SAFETY & PROTECTION 安全與防護



OVER/ UNDER VOLTAGE  
PROTECTION  
過壓 / 欠壓保護



OVER LOAD  
PROTECTION  
過載保護



CHIP TEMPERATURE  
CONTROL PROTECTION  
智能芯片保護



EARTH LEAKAGE  
PROTECTION  
接地漏電保護



OVER / UNDER TEMPERATURE  
PROTECTION  
溫控保護



WATERPROOF  
AND DUSTPROOF  
防水防塵



GROUNDING  
PROTECTION  
接地保護



LIGHTNING  
PROTECTION  
防雷保護



IP55  
PROTECTION  
IP55 防水防塵



FLAME RETARDANT  
PROTECTION  
阻燃保護



CERTIFIED EV CABLE  
CE 認證的電動汽車電纜



conduct  
electricity well  
良好導電性



low fever  
散熱



resist cold  
抗寒



heat-resistant  
耐熱



THE QUALITY YOU DESERVE

您值得擁有的質量

## APP Version



Load balancing feature



Power flow management



Charging History Record  
(via app, plug and go, RFID swipe card)



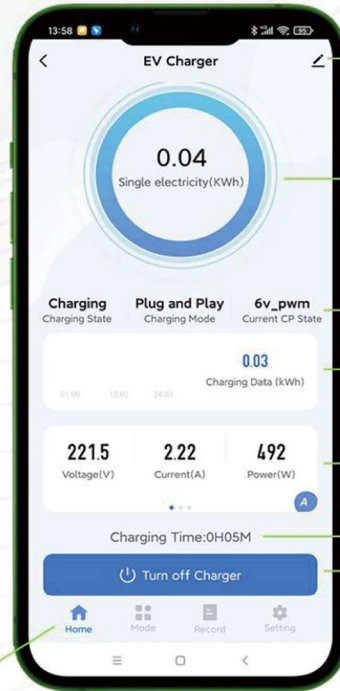
Remote Control by APP  
one or multiple chargers registered

Selection of charging mode  
(Plug and Play, Normal mode, Schedule)

Display the real-time information of the device, start and stop the charging pile

Operation record and fault record

Bind RFID card, adjust current, display version number and equipment number



Charger setting

Power dashboard

Charging details

Charging history

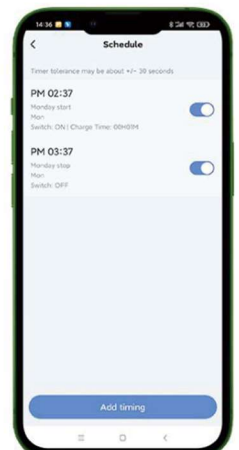
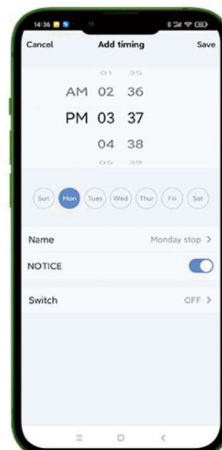
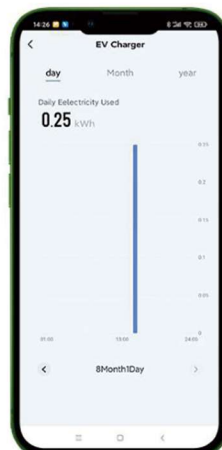
Charging parameters zone

Charging time

Charging button

## HISTORY RECORD

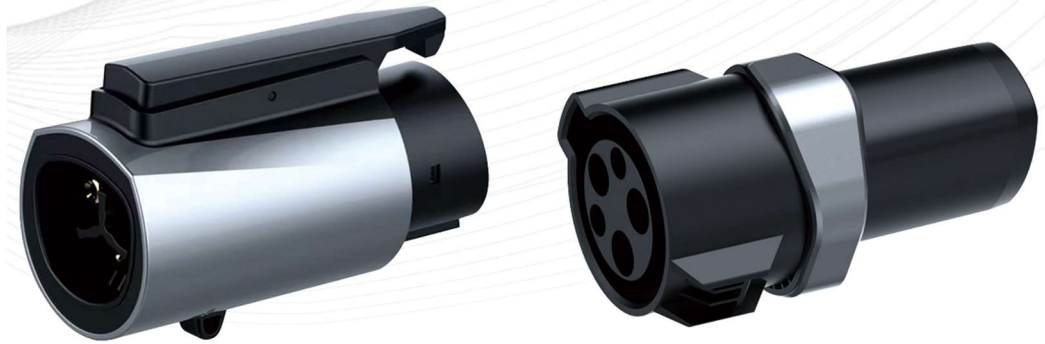
Check your charging history documents anytime





THE QUALITY YOU DESERVE

您值得擁有的質量



• **tesla to Type 1**

• **Type 1 to tesla**

	North America	Europe	Japan	china	Taiwan, China	
DC	 CCS1	 CCS2	 CHAdeMO	 GB/T 20234.3	 CCS1  CCS2  CHAdeMO  Tesla TPC	 Tesla TPC
AC	 Type 1 (J1772)	 Type 2 (Mennekes)	 Type 1 (J1772)	 GB/T 20234.2	 Tesla TPC  Type 1 (J1772)  Type 2 (Mennekes)	

**MAXIMIZE TESLA CHARGING OPTIONS** - Tesla charger adapter designed to safely connect the SAE J1772 chargers to your Tesla vehicle, allows Tesla drivers to use level 1 or level 2 J1772 charging station when out.

**COMPATIBILITY & SNUG FIT** - J1772 to Tesla Adapter compatible with all Tesla Models 3, Y, S, X. UniChinTiyuan Tesla adapters is the same size as OEM parts, ensuring a perfect fit for your car's charging ports, easy to insert and remove.

**CHARGES QUICKLY** - The tesla to j1772 adapter charges at the same speed as the OEM part, can be fully charged in a few hours. No worry about the charging speed slowing down.

**SAFETY GUARANTEE** - Adapter has undergone full test, and CE CQC MA CNAS certified. The tesla charge adapter made of high strength ABS material, not easy to break. 250V, 80A Max, Operating Temperature -22°F to 122°F (-30°C to 50°C). IP54 protection grade, rest assured to use, suitable for outdoor conditions.

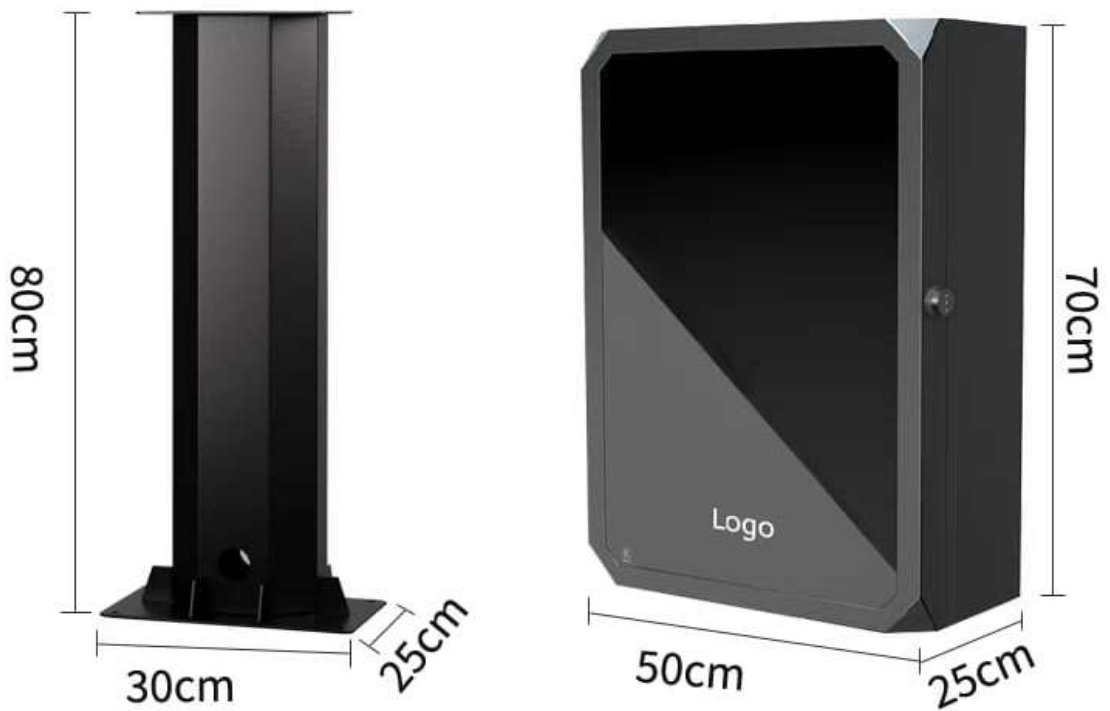
**EASY SET-UP** - Simply connect the j1772 charging adapter to the SAE J1772 charger, then connect to your Tesla vehicle and start charging. Compact size, convenient to carry when you are driving on road.

**AFTER-SALES SERVICE** - UniChinTiyuan will response to customer within 4 hours, 30-days money back/replacement guarantee, 24 months warranty and lifetime technical support.



THE QUALITY YOU DESERVE

您值得擁有的質量



Product name 產品名稱	Charging pile protection box 充電樁保護箱
Material and Process 產品材質與工藝	High-density High-quality Steel plate 高密度優質鋼板 噴塑工藝
Door lock type 門鎖類型	Mechanical password lock, Electronic password lock 機 械密碼鎖、電子密碼鎖、指紋密碼鎖
Box color 箱體顏色	Black/White 黑色/白色
Installation method 安裝方式	Wall-mounted / Column type 掛牆款/立柱款
Weight 重量	Protection box: 16.75KG / Column: 6.15KG 保護箱：16.75KG/立柱：6.15KG



# ABOUT US & JOB REFERENCES

## 關於我們 與 工程記錄

### FOR YOUR REFERENCE

### 供您參閱

### LANTAU SOUTH (RESTRICTED AREA) CONTRACTOR

### 大嶼山南(禁區)專區承辦商





ABOUT US & JOB REFERENCES  
關於我們 與 工程記錄

FOR YOUR REFERENCE  
供您參閱

**LANTAU SOUTH (RESTRICTED AREA) CONTRACTOR**  
**大嶼山南(禁區)專區承辦商**

Customers with Special thanks 特別鳴謝的客戶

- No.54, Shui Hau Village, Lantau, New Territories
- No.19B, Shui Hau Village, Lantau, New Territories
- No.380A, Nai Wai, Tuen Mun, New Territories
- DD325 LOT 221, Shui Hau Village, Lantau, New Territories
- No.81, Sheng Che Tsuen, Shek Kong, Yuen Long, New Territories
- No.153B, Shui Tsiu Lo Wai, Shap Pat Heung, Yuen Long, New Territories
- No.307, Ha Hang, Tai Po, New Territories
- No.35, Tong Fuk Village, Lantau, New Territories
- No.6J, Tong Fuk Village, Lantau, New Territories
- Leyburn Villas, Cheung Sha, Lantau, New Territories